



Mini-Grants 2014 Brainstorming and Guidelines

with your hosts:
Christina Akers, Science Museum of MN
Eli Bossin, Museum of Science, Boston

NISE network™ 
NANOSCALE INFORMAL SCIENCE EDUCATION



Agenda



- Program overview
- Example projects
- Budget & activity/expense eligibility
- Reporting & application process
- New in 2014: Team-Based Inquiry (TBI) professional development opportunity
- Group brainstorm, Q & A
- Wrap-up

What is a mini-grant?!

- Small, one-time awards to support initiatives by NISE Net partners to engage their local audiences in nanoscale science, engineering, and technology topics
- Initiatives should represent an increase or expansion in the nano programming an organization currently offers

“Fine Print”

- Awards **up to \$3,000 dollars**
- Only one application per institution
- Organizations **cannot** be awarded a mini-grant in consecutive years
- Applications accepted September 1-November 1, 2013, with applicants notified via email in December regarding funding status
- Projects must be completed between December 1, 2013-August 31, 2014
- We anticipate awarding forty (40) mini-grants in 2014



Eligibility

Eligible activities include:

- 1) **New efforts to integrate nano** into existing programming
- 2) **New efforts to reach new audiences** with nano programming (including traditionally under-served or under-represented audiences),
- 3) **New partnerships** between museums and nano researchers, community-based organizations, or diversity serving organizations

Eligible institutions:

- The mini-grant program is designed for NISE Network informal science education institutions (such as museums and research center outreach programs) within the United States
- Institutions located outside the United States and K-12 schools are **not** eligible for this program

Agenda

- Program overview
- ○ Example projects
- Budget & activity/expense eligibility
- Reporting & application process
- New in 2014: Team-Based Inquiry (TBI) professional development opportunity
- Group brainstorm, Q & A
- Wrap-up

Example projects: New efforts to integrate nano



Training Workshop





The Children's Museum of
Science and Technology

Re-brand exhibits, develop brochure & scavenger hunt



What is Nanotechnology?

Nano is small - Nano is too small to see! There are one billion nanometers in a meter! That's really small!

Nano is different - Certain materials behave differently at the nanoscale. Different forces dominate and things such as gold are red! Whoa!

Why do we care? - Because things behave differently at the nanoscale, scientists are learning to use these new properties to create new technologies.

Explore Nano-technology @ CMOST

Join CMOST in a search for all things nano here at The Museum. Throughout The Museum you will find this symbol in the different exhibits:

This is a bucky ball! Here at CMOST this means that something in the exhibit either is nano or has a relationship to nanotechnology. When you find one of these symbols, you can learn more about the nano-related portion of the exhibit in this brochure! Let's get exploring!

THE CHILDREN'S MUSEUM OF SCIENCE AND TECHNOLOGY (CMOST)
250 Jordan Road
(in the Rensselaer Technology Park)
Troy, New York 12180

Phone: 518-235-5120
Fax: 518-235-6836
Email: info@CMOST.org
www.CMOST.org

Nano-Tech @ CMOST

THE CHILDREN'S MUSEUM OF SCIENCE AND TECHNOLOGY

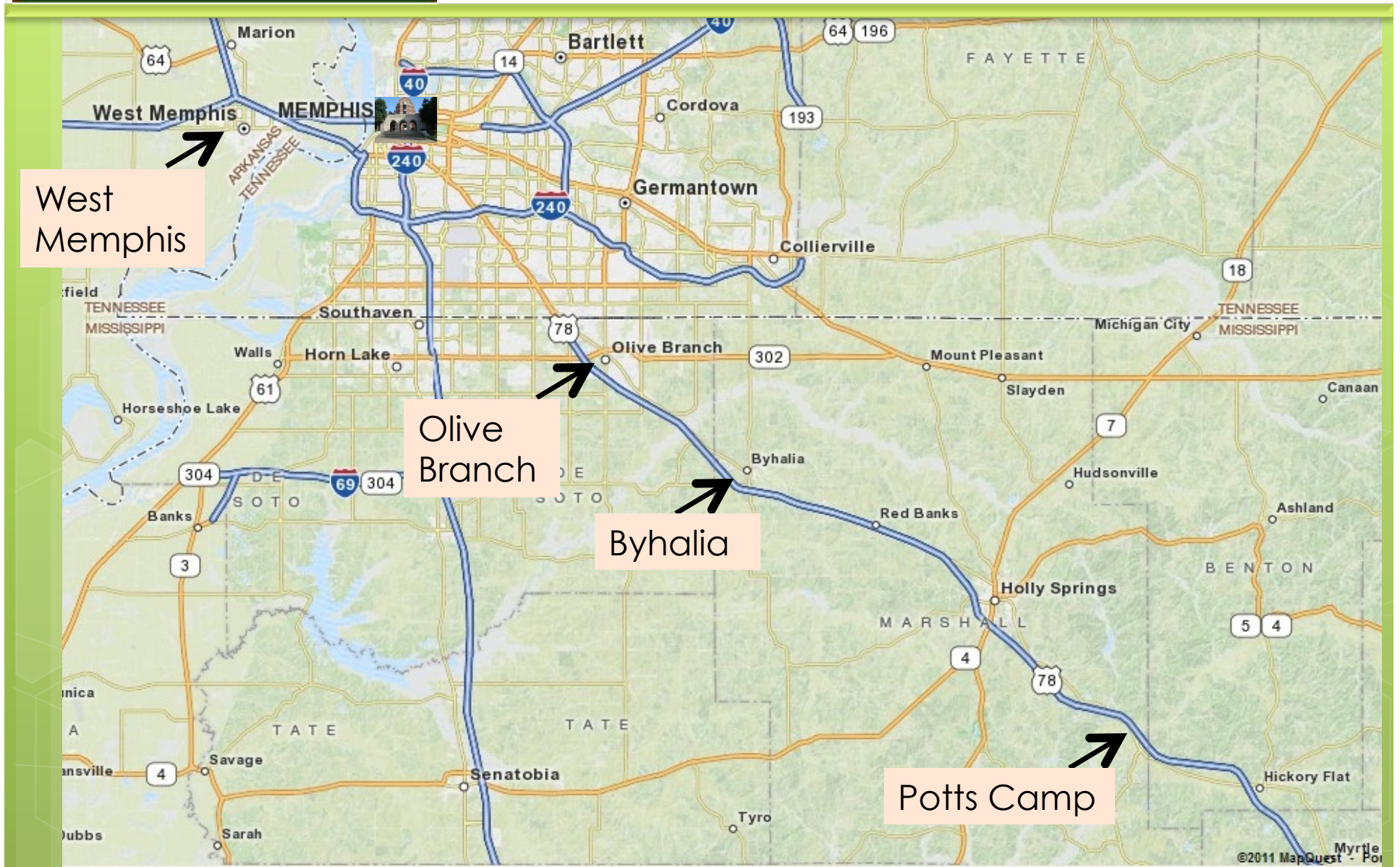
NISE network

Explore • Discover • Imagine

Example projects: New efforts to reach new audiences



Bring nanoscience education to underserved audiences



Develop three distinct kits to share in outreach throughout Network



The Arkansas Discovery Network is a consortium of 7 museums in Arkansas that share exhibits, programs and professional development.

These kits contain a selection of activities from past NanoDays boxes and from the NISE Net website. Complete with instructions and materials, these kits will be loaned to Network partners to use in local classrooms.

Example projects: **New partnerships**



UNIVERSITY OF MARYLAND
NanoFabulous
Developed by the
University of Maryland, College Park
Materials Research Science & Engineering Center

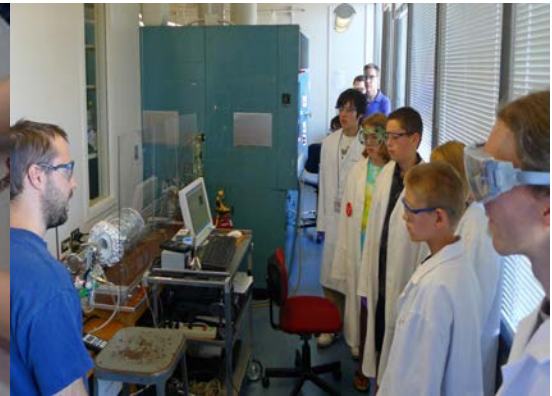
Expanding Nano




Nanotechnology in Our World

Summer Camps

Monday	Tuesday	Wednesday	Thursday	Friday
<i>What is Nano?</i> <ul style="list-style-type: none">•Scale•Nano changes properties	<i>Nano Structures</i> <ul style="list-style-type: none">•Forms of carbon•Hydrophobic surfaces	<i>Nano Products</i> <ul style="list-style-type: none">•Thin films•Liquid crystals•Solar cells	<i>Silver & Gold</i> <ul style="list-style-type: none">•Nanogold & nanosilver•Nano stained glass	Tour of UO chemistry labs and SEM facility



Agenda

- Program overview
- Example projects
-  ○ Budget & activity/expense eligibility
- Reporting & application process
- New in 2014: Team-Based Inquiry (TBI) professional development opportunity
- Group brainstorm, Q & A
- Wrap-up



Budget

The total maximum request is \$3,000. The application will require a breakdown of expenses in the following format:

	Amount (in dollars)	Description
Salary *	<input type="text" value="1500"/>	<input type="text" value="Staff time writing camp curriculum & adapting Surface Area program for camp"/>
Benefits *	<input type="text" value="500"/>	<input type="text" value="Staff involved in writing/adapting programming"/>
Materials & Supplies *	<input type="text" value="1000"/>	<input type="text" value="6 Surface Area demos, plus supplies for 40 kids to adapt/create their own"/>
Other *	<input type="text"/>	<input type="text"/>
PROJECT TOTAL *	<input type="text" value="3000"/>	<input type="text"/>

Projects may be funded by multiple sources, be sure to be clear about these sources – any non-NISE Net funding should be recorded separate from the above table in the online application:

10. If your project will also be supported by other funding sources in addition to the NISE Network mini-grant, please describe those here.

	Amount (in dollars)	Description
Other funding sources	<input type="text"/>	<input type="text"/>



Eligible Expenses



Funds may only be used for work directly relating to the proposed project

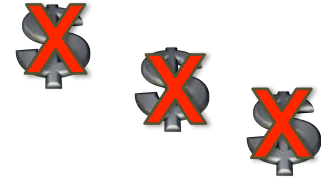
- Staff time and benefits
- Materials and other applicable costs directly related to implementing a proposed project

Some examples of eligible expenses include:

- Staff time – planning meetings, supervising staff, recruiting and training volunteers/staff/participants, developing new curriculum, adapting existing programming, evaluation
- Educational materials – equipment and supplies to deliver nano programming
- Production and documentation – photography, videography, graphic design, writing
- Promotional materials – printing signs, graphic design, newspaper ads
- Travel – to outreach audiences or to meetings for the project
- Other – parking and honorarium for guest speakers, translations




Ineligible Activities & Expenses



- Continuing existing, ongoing activities
- Implementing NanoDays events
- Travel funds or registration to attend a conference
- Indirect costs (overhead), including scholarship and tuition programs, *(note: funds can offset costs for staff time planning/running a workshop or camp, and materials or transportation costs)*
- Projects outside the US
- Alcohol, food and refreshments
- Stipends for individuals to attend a training or workshop

Agenda

- Program overview
- Example projects
- Budget & activity/expense eligibility
-  ○ Reporting & application process
- New in 2014: Team-Based Inquiry (TBI) professional development opportunity
- Group brainstorm, Q & A
- Wrap-up

Reporting Requirements

- Mini-grant recipients are required to complete a short online report describing their project post completion – *NISE Net will provide a template for this report in spring/summer 2014*
- Mini-grant recipients may be asked to attend a NISE Network Meeting to give a brief presentation about their completed project – *NISE Net will cover travel costs for one presenter to attend a meeting to present*

How to Apply


- The mini-grant application is an online only process through SurveyGizmo
- Work cannot be saved on the SurveyGizmo site, please refer to the hard copy PDF of the online application for preview
- Applications left idle in SurveyGizmo for more than ten minutes in will go blank when you progress to the next screen, losing all info entered!!! It is strongly suggested that essay questions be started in a Word doc, saved, and cut-and-paste into the online application



Selection Process

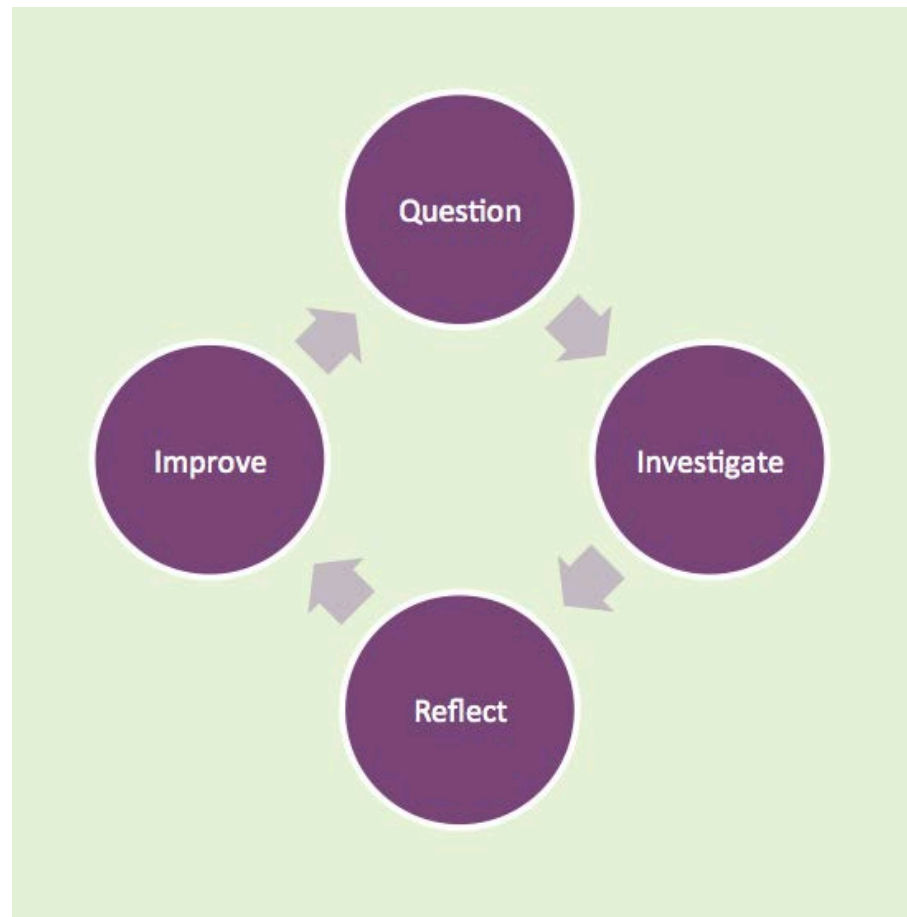
- Proposals undergo a peer review process by NISE Net representatives
- Funds awarded only to institutions and projects that meet the eligibility criteria
- Looking to support proposals that demonstrate strong goals and potential reach, that comply with the project terms, and that represent a diverse range of projects

Agenda

- Program overview
- Example projects
- Budget & activity/expense eligibility
- Reporting & application process
-  ○ New in 2014: Team-Based Inquiry (TBI) professional development opportunity
- Group brainstorm, Q & A
- Wrap-up

Team-Based Inquiry

Team-based inquiry allows us to gather and use the information we need, when we need it, in order to improve our educational products and practices.



Team-Based Inquiry

Question, investigate, reflect, improve

NISE Net is inviting a small number of partner institutions to participate in an intensive, seven-month professional development experience focused on Team-Based Inquiry (TBI).

Experience offered at no charge but will require significant time from two staff January-July 2014:

- Expected to participate in a 1.5 hour phone call every two weeks
- Spend 2 to 4 hours per month on professional development
- Required to attend a one-day workshop in Portland, Oregon, April 2014 (*travel, lodging, & food covered by the NISE Net*)

Team-Based Inquiry

Participating will impact the timeline of your mini-grant project:

- January-March 2014: participants learn about TBI and prepare for shared inquiry experience during NanoDays 2014
- April-July 2014: participants work on TBI studies at their own institutions, specific to their mini-grant projects

Participation will **NOT** effect selection process for mini-grant applications!



Agenda

- Program overview
- Example projects
- Budget & activity/expense eligibility
- Reporting & application process
- New in 2014: Team-Based Inquiry (TBI) professional development opportunity
- ➔ ○ Group brainstorm, Q & A
- Wrap-up

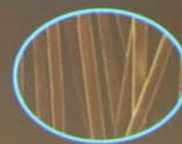
So...



Qs & Ideas?



Are there robots
the size of a freckle or hair?



.1mm





That's all folks!

- Your Region's hub leader is an excellent contact!!!
 - Talk through project ideas
 - Answer application questions
 - Connect you with past award recipients for project advice
- List of past mini-grant awardees:
<http://www.nisenet.org/community/mini-grants>
- List of past brown-bag conversations:
http://www.nisenet.org/community/events/online_workshop
- Blog post for 2013 mini-grant program – **2014 program materials available online September 1, 2014!!!**
http://www.nisenet.org/blog/nanodays/nise_network_announces_2013_mini-grants_-_applications_due_november_4_2012



Thank you



This presentation is based on work supported by the National Science Foundation under Grant No. 0940143.

Any opinions, findings, and conclusions or recommendations expressed in this presentation are those of the author(s) and do not necessarily reflect the views of the Foundation.