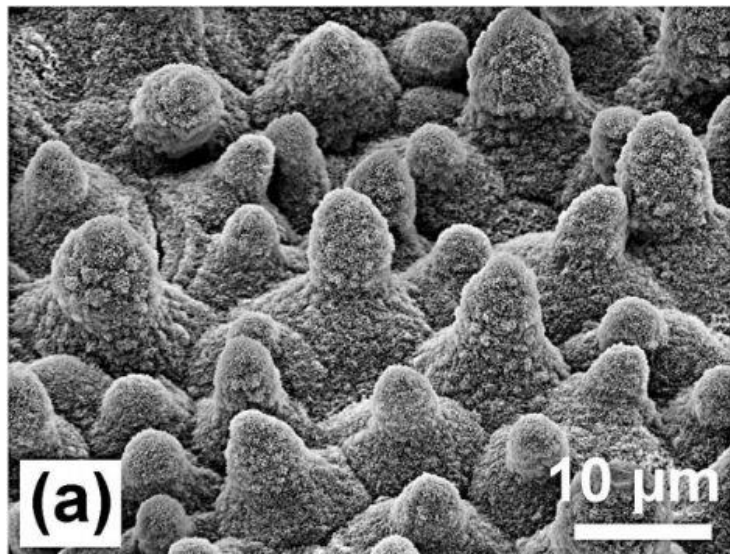


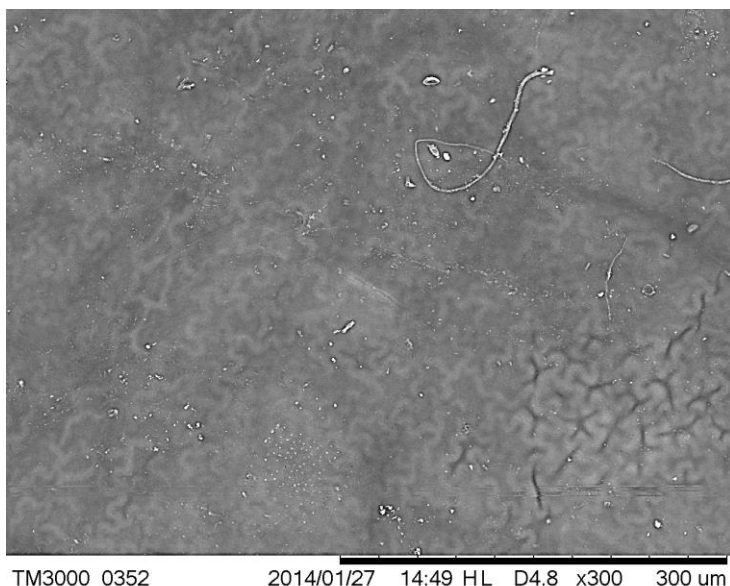
Scanning Electron Images of Lotus and Magnolia leaves



SEM image of *Nelumbo nucifera*
(Lotus)

Open Access under the terms of the Creative Commons Attribution License

Source: *Beilstein Journal of Nanotechnology* (<http://www.beilstein-journals.org/bjnano>)



SEM image of *Magnolia gradiflora* leaf

Image Institute of Electronics and Nanotechnology
Georgia Institute of Technology