

Team-Based Inquiry Stories

NISE Network Partners Share What Works (and What Doesn't!)

Brown-Bag Presentation 11/4/14



Presenters

David Mues & Sheila Montgomery

Powerhouse Science Center

Patsy Reublin & Denton Kooyman (Lauren Collins)

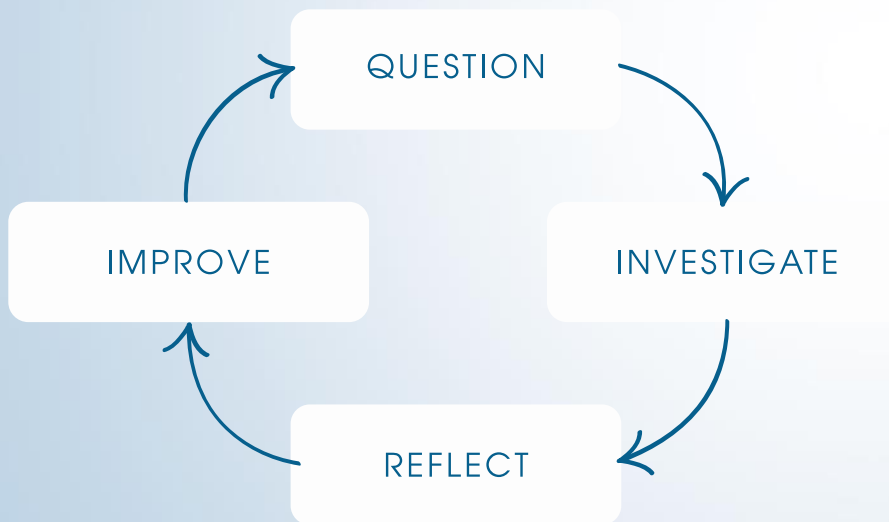
Bootheel Youth Museum

Anika Taylor (Danni Dancer)

The Bakken Museum

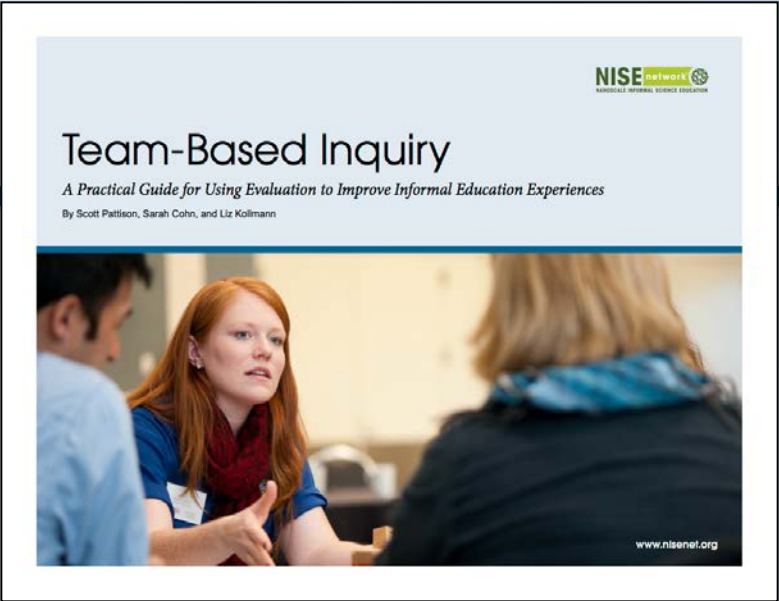
Team-Based Inquiry

An approach to empowering professionals to get the data they need, when they need it, in order to improve their products and practices and create successful educational experiences.



- Systematic
- Led by non-evaluation professionals
- Collaborative and team based
- Small scale and focused
- Embedded in work

Team-Based Inquiry



Question Worksheet

Project Title:
Educational Goal(s)
List the goals of your educational experience.

Prioritizing Inquiry Questions
Fill in the table below for each of the broad inquiry questions that you and your team have brainstormed. Based on how useful, actionable, and feasible each question is, determine whether it is a high, medium, or low priority for your team-based inquiry study.

Inquiry question	Why is this question important to your team?	What types of information would you need to answer this question (e.g., visitor comments, program observations)?	What resources would you need to answer this question (e.g., staff, time, expertise, data collection forms)?	What changes might you be able to make if you answered this question?	Based on all of this, how high of a priority is this question? H=High, M=Medium, L=Low
					H M L
					H M L
					H M L

Data Reflection Cheat Sheet

Use the four steps outlined below to focus on the purpose of your team-based inquiry (TBI) study, immerse yourselves in the data, and make sense of the information you collected.

- 1. Describe and clarify:**
 The facilitator reminds the team of the inquiry and data discussion goals. The group asks questions as needed.
- 2. Observe and discuss:**
 The group spends time reviewing the data. Afterwards, each team member mentions one unique piece of data that he or she feels is particularly interesting or important.
- 3. Immerse and notice:**
 Each team member suggests a unique theme or pattern he or she notices in the data related to the goal of the data reflection.
- 4. Categorize and explain:**
 After exhausting potential themes, the team sorts the data by theme, counting the number of data points in each category and discussing possible explanations.

Methods Worksheet

Project Title: You Decide!

Team-Based Inquiry Question(s)

- How could this activity be improved to be more engaging for more than one visitor at a time?
- What strategies best support visitor engagement and learning in this activity?

Selecting Methods
Fill in the table below for each of the common data collection methods that are used to answer TBI questions. Based on how each method can help you collect the most important data to answer your TBI question(s), determine whether it is a high, medium, or low priority for your data collection process.

Method	What important information could you collect with this method?	What important information could you not collect with this method?	What resources would you need to conduct this method to answer your question (e.g., staff, time, materials, data collection forms)?	What other methods could you use to collect some of this information?	How necessary is this method to collect the information you need? H=High, M=Medium, L=Low
Questionnaire /Survey					H M L
Interview					H M L
Observation					H M L
Other?					H M L



This presentation is based on work supported by the National Science Foundation under Grant No. 0940143. Any opinions, findings, and conclusions or recommendations expressed in this presentation are those of the authors and do not necessarily reflect the views of the Foundation.

