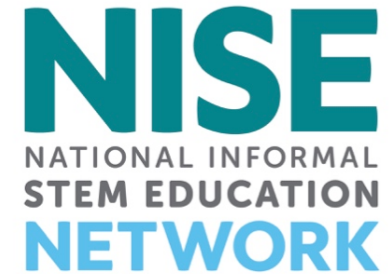


NISE Net Online Workshop

Learn More About the 2019 Explore Science: Earth & Space Toolkit

Tuesday, September 18, 2018



Welcome!

Today's presenters are:

- **Ali Jackson**, Sciencenter
- **Frank Kusiak**, Lawrence Hall of Science
- NISE Network toolkit team



As we wait to get started with today's discussion, please:

Introduce yourself! Type your name, institution, and location into the Chat Box

Questions? Feel free to type your questions into the Chat Box at any time throughout the webinar or use the raise your hand function in the participants list and we'll unmute your microphone.

Today's discussion will be recorded and shared on nisenet.org at: nisenet.org/events/online-workshop

Online Workshop Overview



NISE Network Overview

Explore Science: Earth &
Space Project & 2019 Toolkit

Upcoming Professional
Development

Q/A

NISE

NATIONAL INFORMAL
STEM EDUCATION
NETWORK



*We choose **projects** that are important to us, and we're positioned to do well.*



HOW WE WORK

Through our national
collaborative
NETWORK

We create, refine, and disseminate
EDUCATIONAL PRODUCTS
and
PROFESSIONAL DEVELOPMENT RESOURCES

In order to
INCREASE THE CAPACITY of
informal educators

PARTNERS

hundreds of organizations

RESOURCES

museums



colleges + universities



**LOCAL
COLLABORATORS**



schools



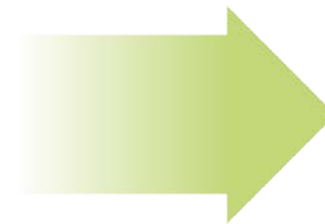
libraries + community
organizations



youth-serving
organizations



scientists



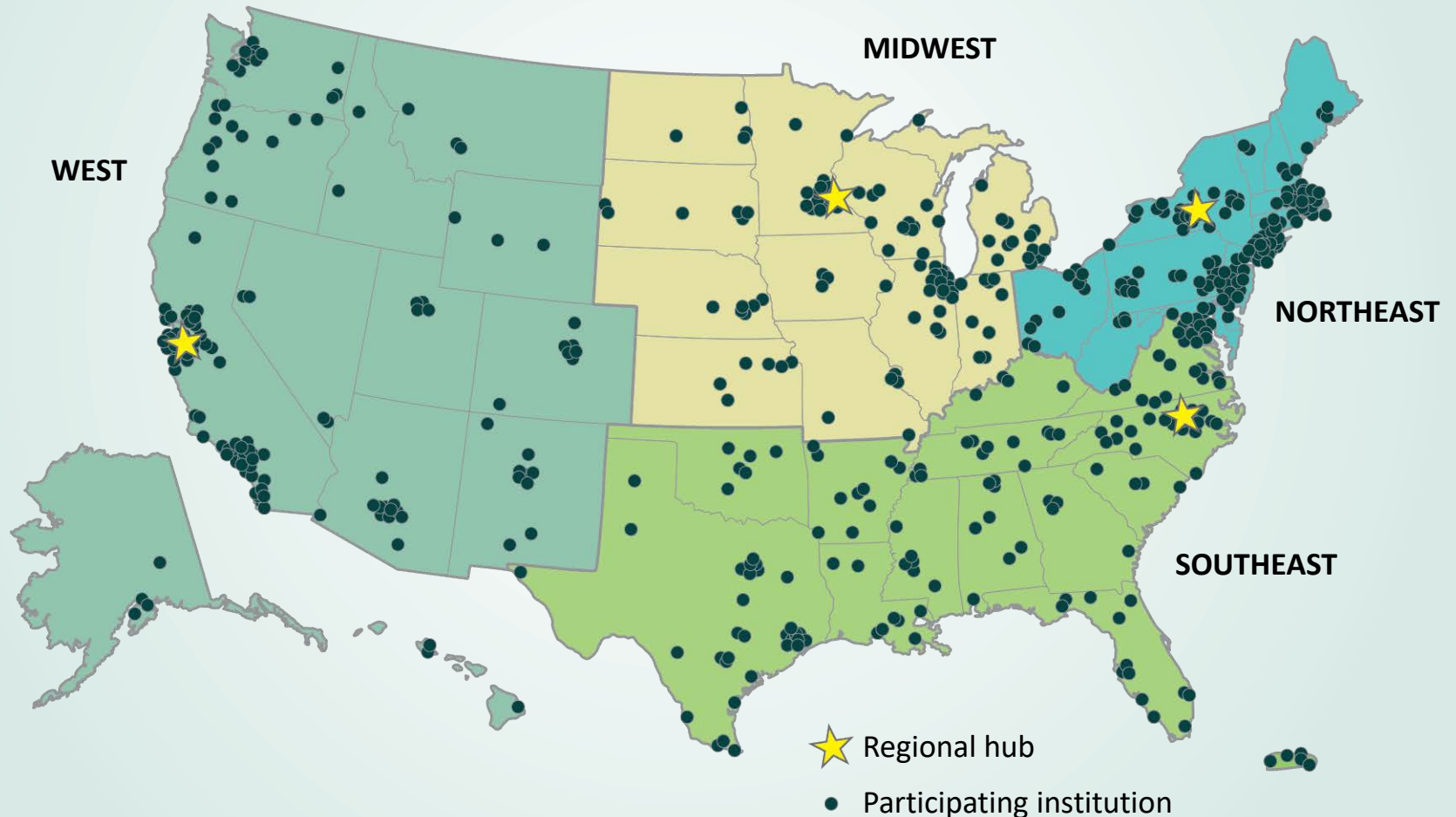
to
ENGAGE PUBLIC AUDIENCES
in STEM learning



PARTNERS

HUNDREDS OF ORGANIZATIONS

participate in NISE Network activities across the United States.



Stay Connected

NORTHEAST – Ali Jackson - Sciencenter, Ithaca, NY

Northeast: NY, VT, NH, ME, RI, CT, and MA

Mid-Atlantic: PA, NJ, MD, DC, DE, OH, and WV

SOUTHEAST – Brad Herring - Museum of Life and Science, Durham, NC

Southeast: VA, NC, SC, KY, TN, LA, MS, AL, GA, FL, and Puerto Rico

South: TX, AR, and OK

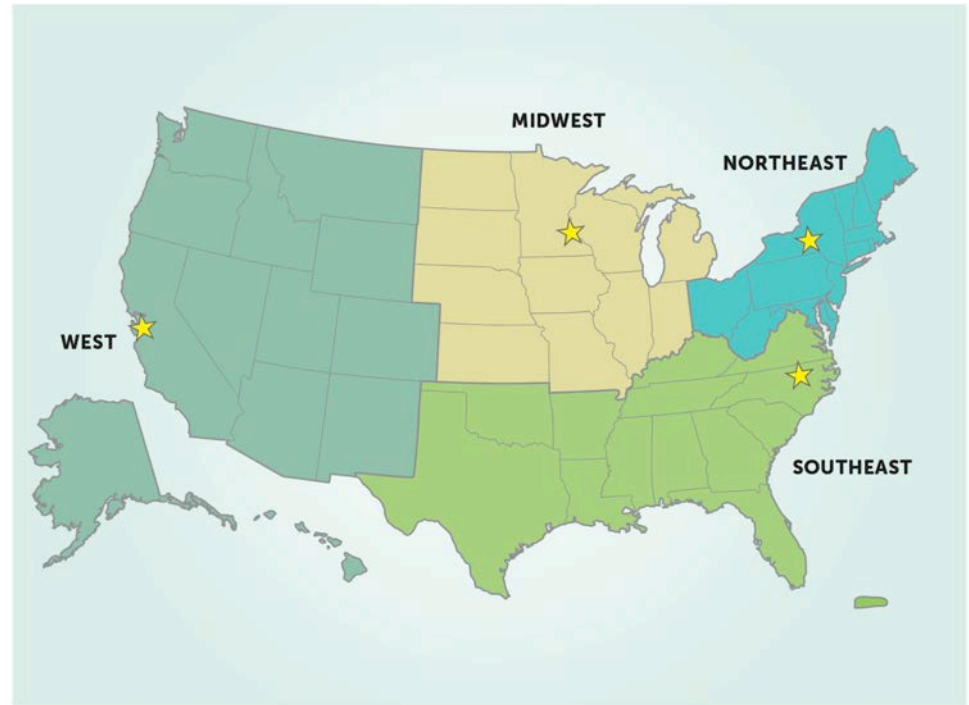
MIDWEST – Christina Leavell - Science Museum of Minnesota, St. Paul, MN

ND, SD, NE, KS, MN, IA, MO, WI, IL, MI, and IN

WEST – Frank Kusiak - UC Berkeley Lawrence Hall of Science, Berkeley, CA

Southwest: CA, NV, AZ, and HI

West AK, WA, OR, ID, MT, WY, CO, UT, and NM



Explore Science: Earth & Space



PARTNER EVENT VIDEO

Earth and Space

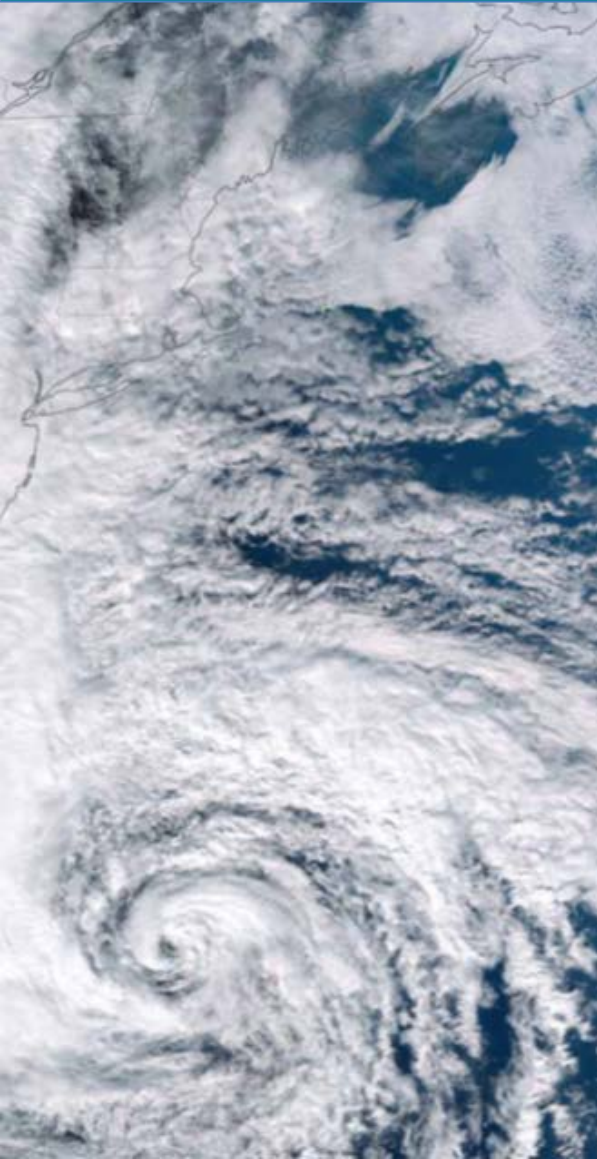
GOALS

Engage public and professional audiences in learning about Earth and space sciences

Encourage new and strengthened partnerships among national and local organizations that support informal and lifelong learning



STEM Focus



Disciplinary

- Heliophysics
- Earth science
- Planetary science
- Astrophysics

Cross-disciplinary

- Science, technology, and society

Learning Framework



1. Experience Earth and space **PHENOMENA** and explore science findings.
2. Use the scientific **PROCESS** and reflect on science as a way of knowing.
3. **PARTICIPATE in** the scientific community and identify as a science learner.

Design



Overall:

- Inviting, appealing, and engaging
- Compatible with the exhibition design

Materials and maintenance:

- Safe for visitors of all ages
- Easy to, set up, clean up, and store
- Consumables are inexpensive and readily available

Accessibility:

- Universal Design approach
- Bilingual English and Spanish

Design principals:

- Engaging
- Authentic
- Current
- Relevant

Target Audiences



Public: Informal and lifelong learners

- Museum audiences
 - Families with children ages 4-10
 - School groups K-6
 - Other museum visitors
- Underserved audiences
 - Museum visitors
 - Offsite programs

Professional: Informal educators

- Museum educators
- Educators in out of school settings

Contents



All necessary materials to engage the public, provide professional development, and build partnerships:

- **STEM educational resources**, including hands-on activities, videos, and media
- **Professional resources** for planning, implementation, and staff training

Water Runoff



Observing the Sun



TOOLKIT APPLICATION

Application Timeline



Online application is now OPEN to apply for a free physical toolkit

November 1, 2018: Deadline to submit application

December 2018: Notification of award decisions

January 2019: Toolkits delivered to successful applicants

March - May 2019: Successful applicants host required public event(s)

June 15, 2019: Event reports due online

Toolkit Eligibility



The physical toolkit is designed for informal science education public events and outreach. To be eligible to receive a physical toolkit, organizations must be:

- Located in the United States
- Public informal science outreach and education institutions such as:
 - science museums and science centers,
 - children's museums,
 - natural history museums,
 - public planetariums and observatories, and
 - NASA visitor centers

Please note that K-12 schools, afterschool programs, libraries, parks, and astronomy clubs are not eligible to receive physical toolkits. Consider downloading a digital toolkit if your organization does not meet eligibility criteria. Digital toolkits will be available for download in February 2019 at nisenet.org/earthspacekit

Application Process



Application link

Applications must be submitted online using SurveyGizmo by November 1, 2018.

- surveygizmo.com/s3/4404262/Earth-Space-Toolkit-2019-Application

Selection process

A total of 350 toolkits will be awarded through a competitive award process.

Partner Expectations



Recipients must:

- Use the toolkit for at least one event between March and May 2017
- Meet data reporting requirements – due June 15, 2017
- Restock and maintain the toolkit

Recipients may:

- Attend professional development online workshops
- Collaborate with local experts
- Collaborate locally to reach underserved audiences

Using Your Toolkit All Year Long



- **Celestial events:** Meteor showers, lunar eclipses, full moons, planetary events, and more
- **Earth and space science events:**
 - World Water Day, March 22, 2019
 - Earth Hour, March 30, 2019
 - Global Astronomy Month, April
 - Yuri's Night, April 12, 2019
 - Earth Day, April 22, 2019
 - National Environmental Education Week, week of Earth Day
 - Astronomy Day (Spring), May 11, 2019
 - Astronomy Week (Spring), May 6-12, 2019
 - World Oceans Day, June 8, 2019
 - Asteroid Day, June 30, 2017
 - International Observe the Moon Night, October 20, 2018; TBD 2019
 - Astronomy Day (Fall), October 5, 2019
 - Astronomy Week (Fall), September 30-October 6, 2019
 - World Space Week, October 4-10, 2019
 - Earth Science Week, October 14-20, 2019

PROFESSIONAL DEVELOPMENT

Upcoming Online Workshops



Celebrating the Moon, Our Nearest Neighbor in Space

Tuesday, October 9, 2018

2pm-3pm Eastern / 11am-12pm Pacific

Deepening and Extending Family Engagement and Learning Through Interactive Exhibits and Facilitated Hands-on Activities

Tuesday, October 23, 2018

2pm-3pm Eastern / 11am-12pm Pacific

****Orientation Workshop for NEW Partners****

Tuesday, January 29, 2019

2pm-3pm Eastern / 11am-12pm Pacific

Science Behind the 2019 Explore Science: Earth & Space Toolkit Activities

February & March, 2019

Tuesdays, 2pm-3pm Eastern / 11am-12pm Pacific

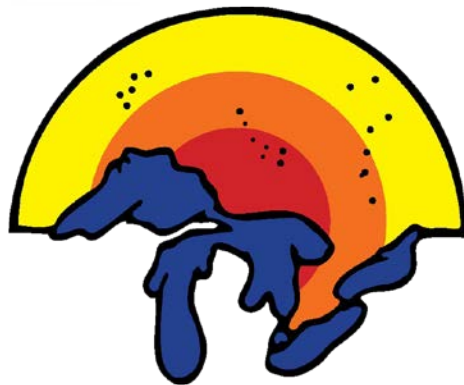
Learn more at nisenet.org/events

ASTC & GLPA



ASTC 2018 Conference, hosted by Connecticut Science Center, September 29-October 2, 2018 in Hartford, CT

- Booth and *Sun, Earth, Universe* exhibition
- Sessions
- Partner Happy Hour and Breakfast



2018 ANNUAL CONFERENCE

EAST LANSING, MICHIGAN

2018 Great Lakes Planetarium Association (GLPA) Conference, October 10-13, 2018 in East Lansing, MI

- Booth
- Workshop
- Come say hi!

Questions?



EXPLORE SCIENCE Earth & Space

Applications Now Open!

**Explore Science: Earth & Space 2019 toolkit applications
are due November 1, 2018**



<http://www.nisenet.org/earthspacekit-apply>

Get Involved

Learn more and access the
NISE Network's online digital resources
nisenet.org

Subscribe to the monthly newsletter
nisenet.org/newsletter



Follow NISE Net on social networking
nisenet.org/social



Thank You

