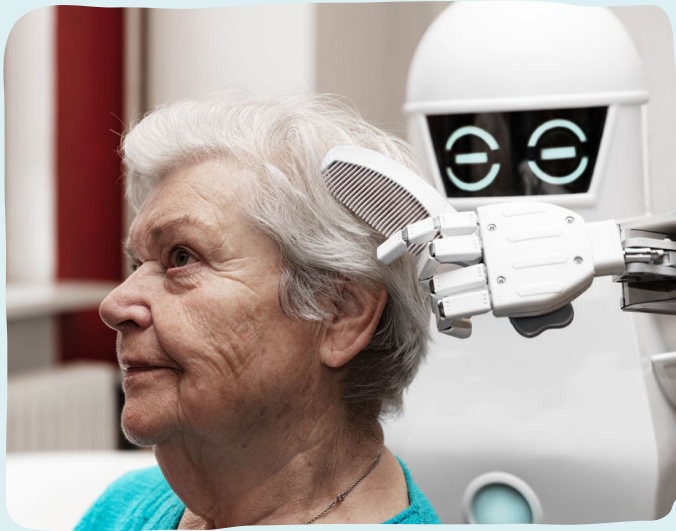


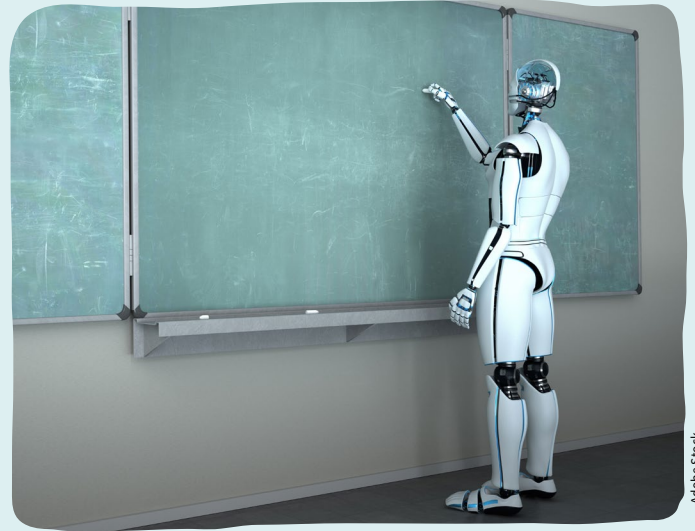
Robot Caregiver



Adobe Stock

This robot helps elderly people live independently by assisting with mobility and household tasks as well as helping to prevent loneliness.

Robot Teacher



Adobe Stock

This robot can teach any school subject to students of any age, preschool through college.

Robot Artist



Adobe Stock

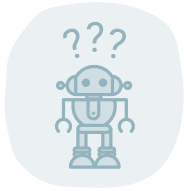
This robot creates beautiful works of art for people to enjoy in museums or to buy for their homes.

Robot Best Friend



Adobe Stock

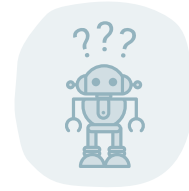
This robot is the perfect friend, able to play your favorite games and talk about your favorite things, and is always there for you.



Robot Teacher

One day, the Robot Teacher is giving a history test to a class of high schoolers when one student starts copying answers from another student's paper.

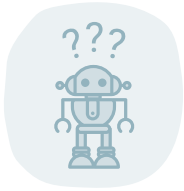
**Based on its abilities,
how does the robot react?**



Robot Caregiver

One day, the Robot Caregiver is conversing with an elderly woman who starts talking about her belief in an afterlife.

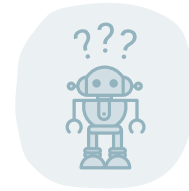
**Based on its abilities,
how does the robot react?**



Robot Best Friend

One day, a person confides in their Robot Best Friend that they are planning to rob a bank.

**Based on its abilities,
how does the robot react?**



Robot Artist

One day, the Robot Artist is asked to create a perfect replica of a highly valuable famous work of art.

**Based on its abilities,
how does the robot react?**

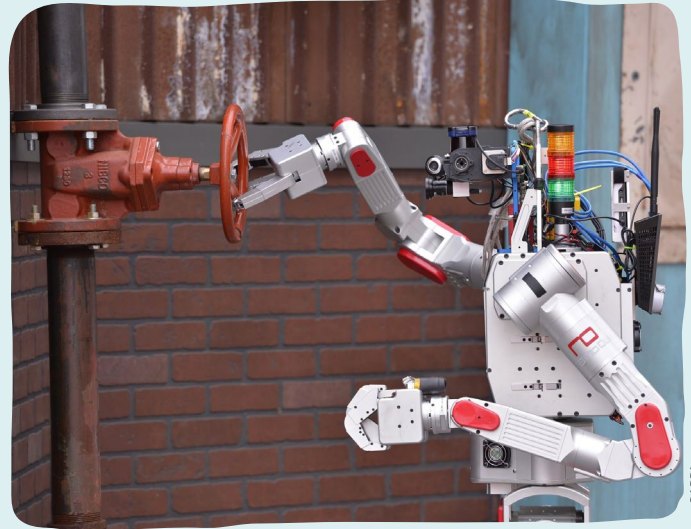
Robot Doctor



Adobe Stock

This robot can diagnose and treat all kinds of diseases and injuries while also providing helpful information to patients.

Robot Firefighter



DARPA

This robot can enter burning buildings and other dangerous situations to rescue people as well as help to put out fires.

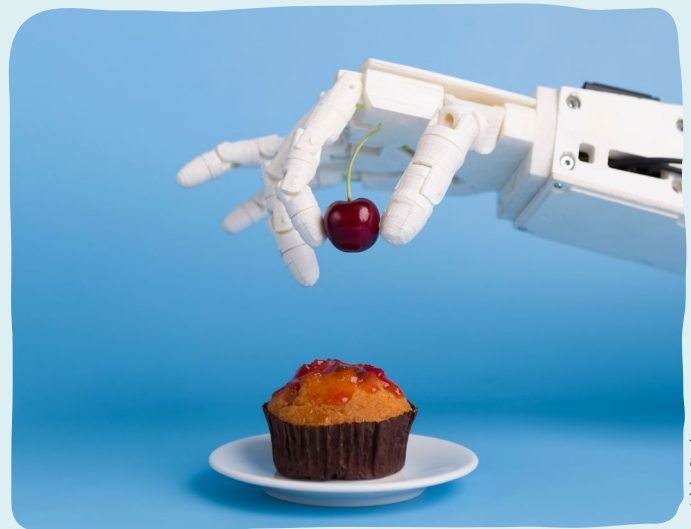
Robot Nanny



Adobe Stock

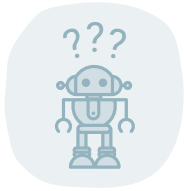
This robot can entertain and take care of babies and children while their parents are busy.

Robot Chef



Adobe Stock

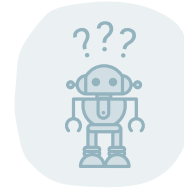
This robot can prepare hundreds of different meals and even invent delicious new recipes.



Robot Firefighter

One day, a child begs the Robot Firefighter to save her favorite stuffed animal from a house fire after everyone in the family has escaped.

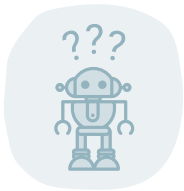
**Based on its abilities,
how does the robot react?**



Robot Doctor

One day, the Robot Doctor diagnoses a patient with a serious condition and has to tell them the bad news.

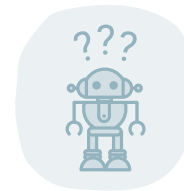
**Based on its abilities,
how does the robot react?**



Robot Chef

One day, the Robot Chef discovers that several customers have become sick after eating its meals.

**Based on its abilities,
how does the robot react?**

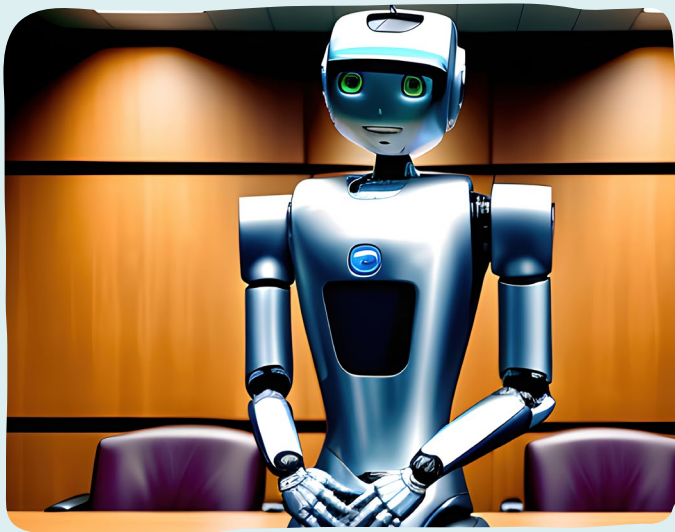


Robot Nanny

One day, a young child asks whether the Robot Nanny believes in Santa Claus.

**Based on its abilities,
how does the robot react?**

Robot Lawyer



Adobe Stock

This robot assists people with legal matters, including arguing on their behalf in the courtroom.

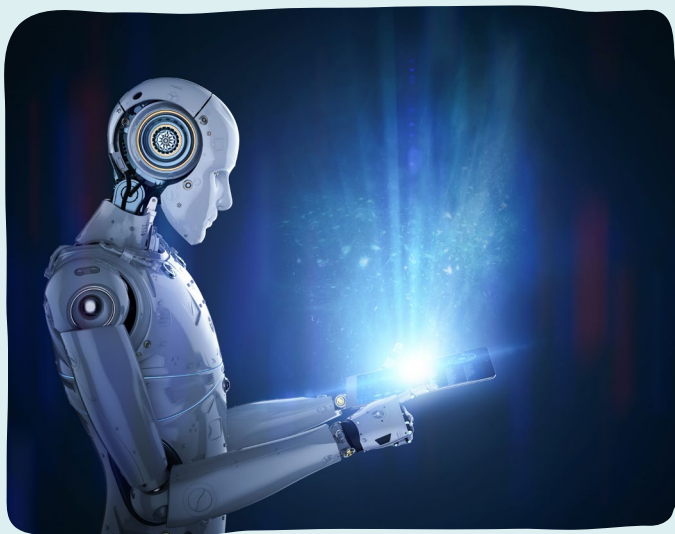
Robot Factory Worker



Adobe Stock

This robot can perform a wide variety of manual tasks quickly and accurately.

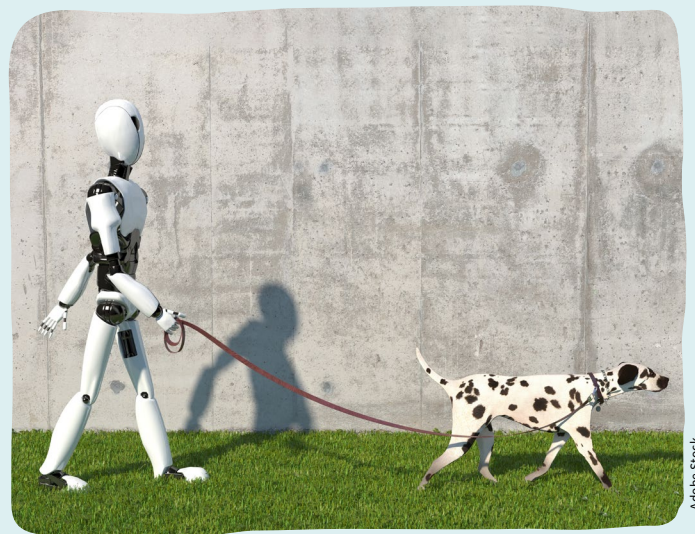
Robot Inventor



Adobe Stock

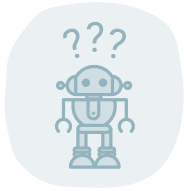
This robot develops new technologies and products to make people's lives easier.

Robot Dog-Walker



Adobe Stock

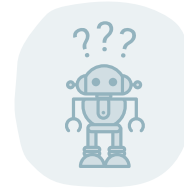
This robot takes good care of your pets while you are away, keeping them happy and healthy.



Robot Factory Worker

One day, the Robot Factory Worker is packing boxes when all the human workers go on strike, demanding safer working conditions.

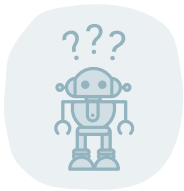
**Based on its abilities,
how does the robot react?**



Robot Lawyer

One day, the Robot Lawyer is asked to represent a client who has been replaced by a robot at his workplace.

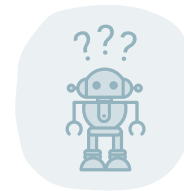
**Based on its abilities,
how does the robot react?**



Robot Dog-Walker

One day, the Robot Dog-Walker is walking a customer's beloved dog when a hand malfunction causes the leash to drop and the dog sprints away.

**Based on its abilities,
how does the robot react?**



Robot Inventor

One day, the Robot Inventor learns that a technology it invented has led to increased water pollution, causing harm to an endangered species.

**Based on its abilities,
how does the robot react?**
