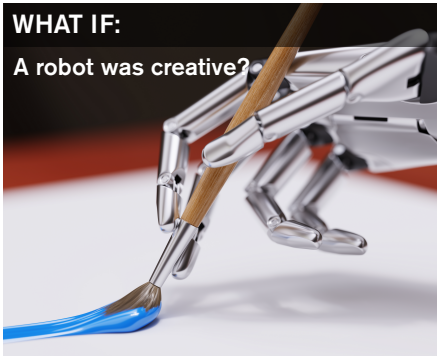


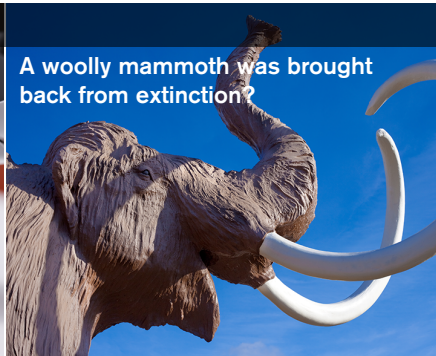
FRANKENSTEIN²⁰⁰

WHAT IF:

A robot was creative?



A woolly mammoth was brought back from extinction?



You were hired to be a research assistant in Dr. Frankenstein's Lab?



Learn more and download our materials for free at frankenstein.asu.edu

Frankenstein200 is a project from Arizona State University, NISE Net, and the National Science Foundation that uses the 200th anniversary of Mary Shelley's Frankenstein as an occasion to explore emerging technologies such as artificial intelligence, synthetic biology, and human enhancement. Through seven hands-on making activities and an online alternate reality game, and reflect on some of humanity's most challenging and enduring questions:

What is life?

What does it mean to be human?

Why do we create?



NISE NATIONAL INFORMAL
STEM EDUCATION
NETWORK



Founded by Dr. Victoria "Tori" Frankenstein, the Laboratory for Innovation and Fantastical Exploration seeks the next generation of thinkers and makers to investigate how science and technology shape the world around us.

Begin the experience now at Frankenstein200.org

#ComeToLIFE



FRANKENSTEIN²⁰⁰

