

WELCOME!

NISE NETWORK

PARTNER BREAKFAST | ASTC 2018



Contents

Overview

Projects

Highlights from 2018

Discussion

NISE NETWORK

The National Informal STEM Education Network
is dedicated to supporting learning about science,
technology, engineering, and math (STEM).



Our community
includes educators,
researcher/evaluators,
and scientists.

NISE Net supports **informal learning about STEM** in communities across the United States.

Our activities
are fun and accessible
for everyone.

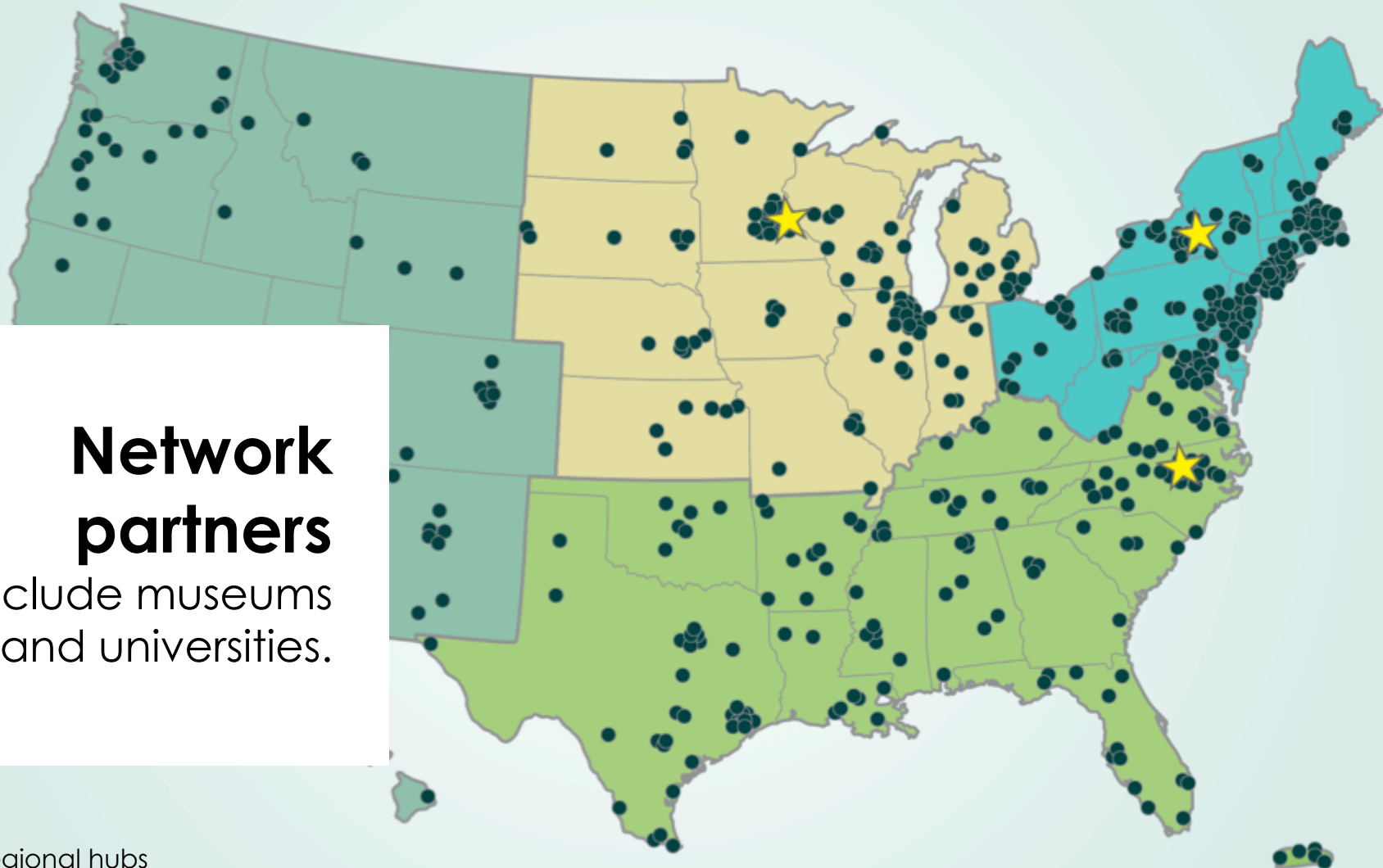


Hundreds of organizations participate in the NISE Network.

Network partners

include museums and universities.

★ Regional hubs



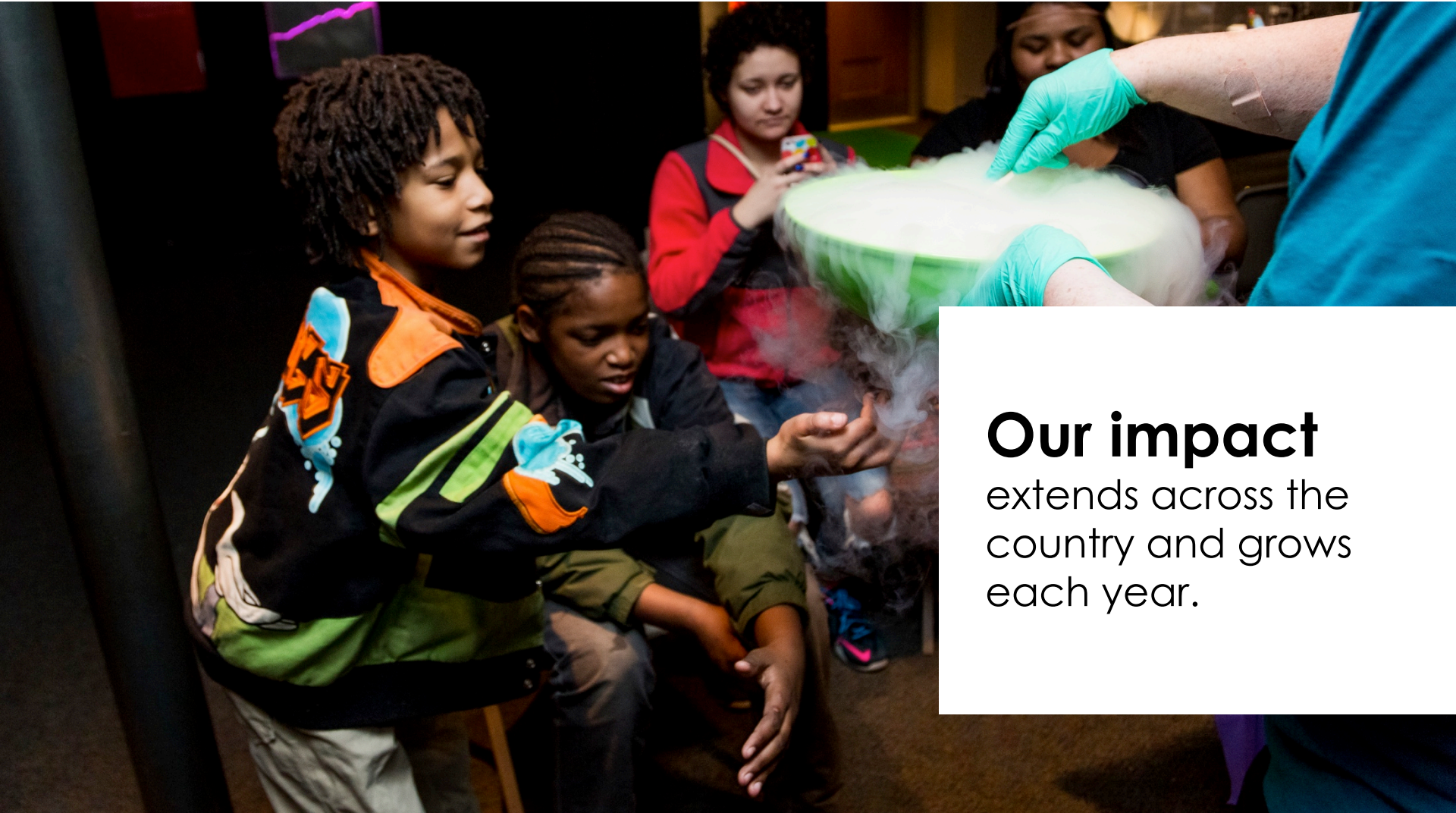
Partner organizations use Network resources to engage audiences in their communities.



Our projects

bring together diverse people to share and learn from each other.

Together we reach **millions of people** each year!



Our impact
extends across the
country and grows
each year.

PROJECTS

NISE Net projects tackle challenging problems and develop relevant knowledge, tools, and practices.



Our Network

relationships,
knowledge, and
infrastructure support a
variety of projects.

NISE Net has projects in many areas of STEM.

Synthetic biology

2014-2018



Chemistry

2016-2019



2005 ● ● ● ● ● ● ● ● ● ● ● ● ● ● ● ● 2021



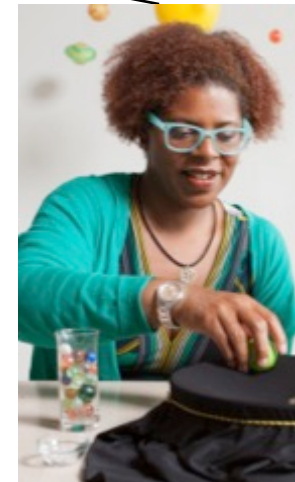
Nanotechnology

2005-2017



Frankenstein

2015-2019



Earth & Space

2016-2021

Nanoscale Informal Science Education Network

A close-up photograph of a man with glasses and a young girl with dark curly hair, both smiling and looking at a science exhibit. The man is wearing an orange shirt and is leaning over the girl. The exhibit consists of a wooden frame with several vertical metal rods. The girl is looking through one of the rods. The background is slightly blurred, showing some green and white elements.

Building a national Network

to engage audiences
in learning about
current STEM research

NanoDays

“Buy it—or better not?”
New NanoDays program
available on nisenet.org



Building with Biology

Creating dialogue

among researchers,
educators, and public
audiences about STEM
and society





Building with Biology

Hands-on activity kits and
NEW public forum available
on nisenet.org

New guide on public
engagement with science
on nisenet.org

Frankenstein200

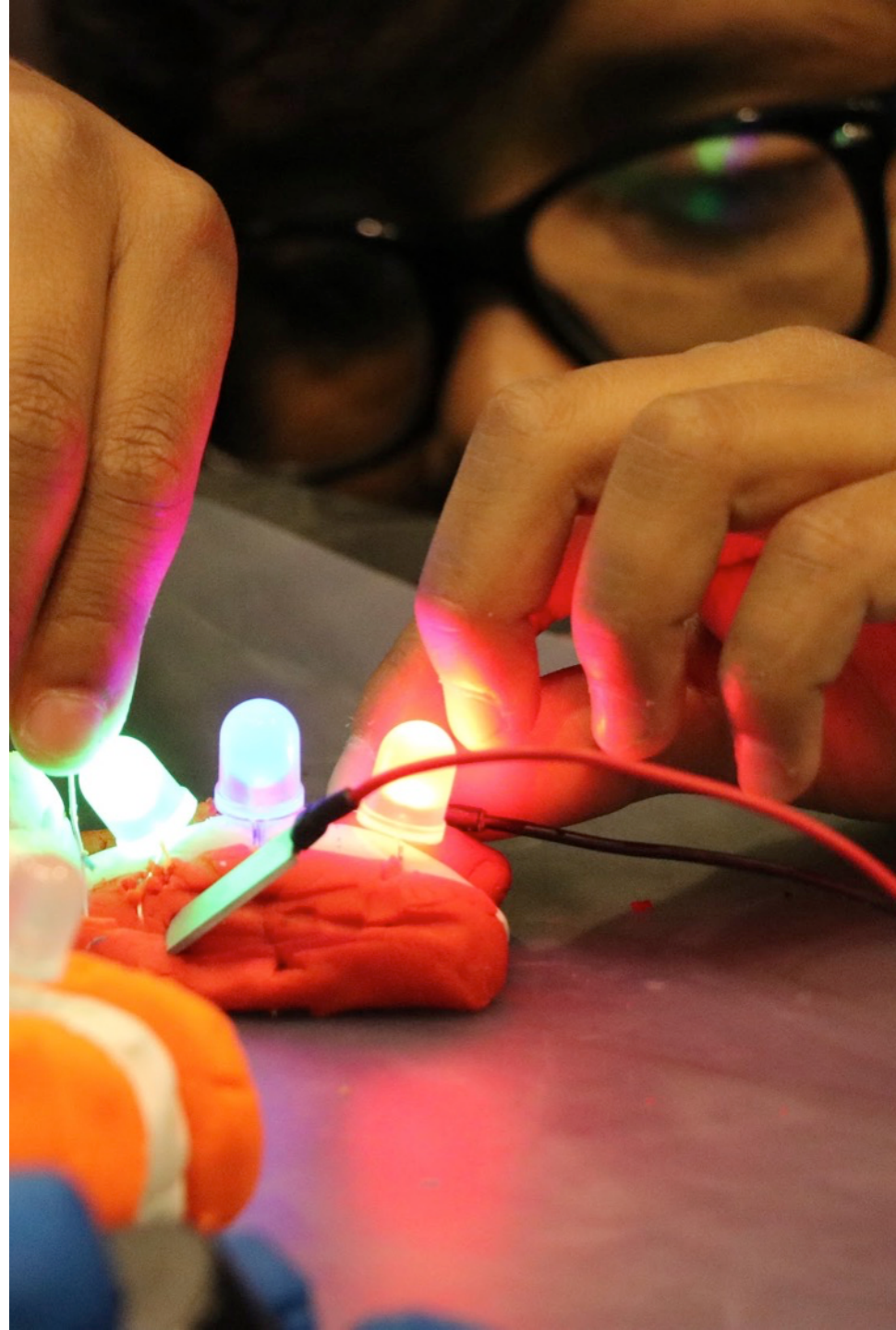
**Exploring
creativity**
and responsible
innovation in a
transmedia
environment



Frankenstein200

Digital kit available at
nisenet.org/frankensteinkit

Alternate reality game
available at
frankenstein200.org



Space & Earth Informal STEM Education



**Connecting
learners**
to authentic
Earth and space
science and experts



Space & Earth

350 Earth & Space toolkits –
applications due Nov. 1, 2018

52 copies of the *Sun, Earth,
Universe* exhibition distributed
2018–2019

Earth & Space toolkit (2020) and
Moon & Beyond game (2021)

Previous digital toolkits available
at
[http://www.nisenet.org/earthsp
acekit](http://www.nisenet.org/earthspacekit)

Explore Science: Let's Do Chemistry



**Promoting
positive
attitudes**
toward learning
chemistry

ChemAttitudes

National Chemistry Week
events October 21-27

Digital kit available at
nisenet.org/chemistry-kit



For these and other opportunities, **regional hub leaders** are your connection to the Network!

Keep in touch!

Hub leaders:

nisenet.org/contact

Newsletter:

nisenet.org/newsletter

Social networking:

nisenet.org/social



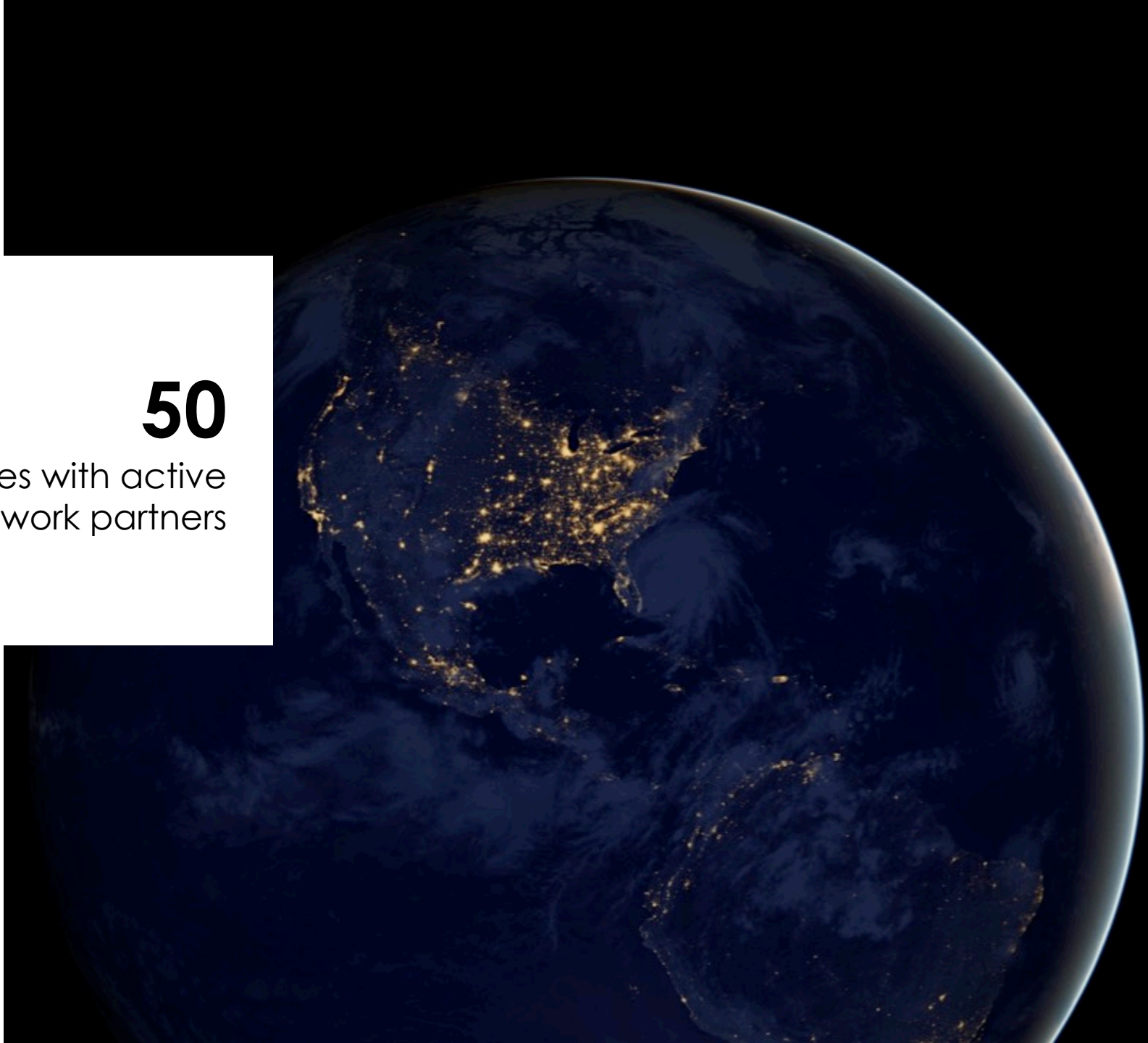
2018 HIGHLIGHTS



400+
organizations
participating in
Network projects

50

states with active
Network partners





10,000,000

people reached through the
Nano project



1,300,000
people reached
through the
Earth & Space project



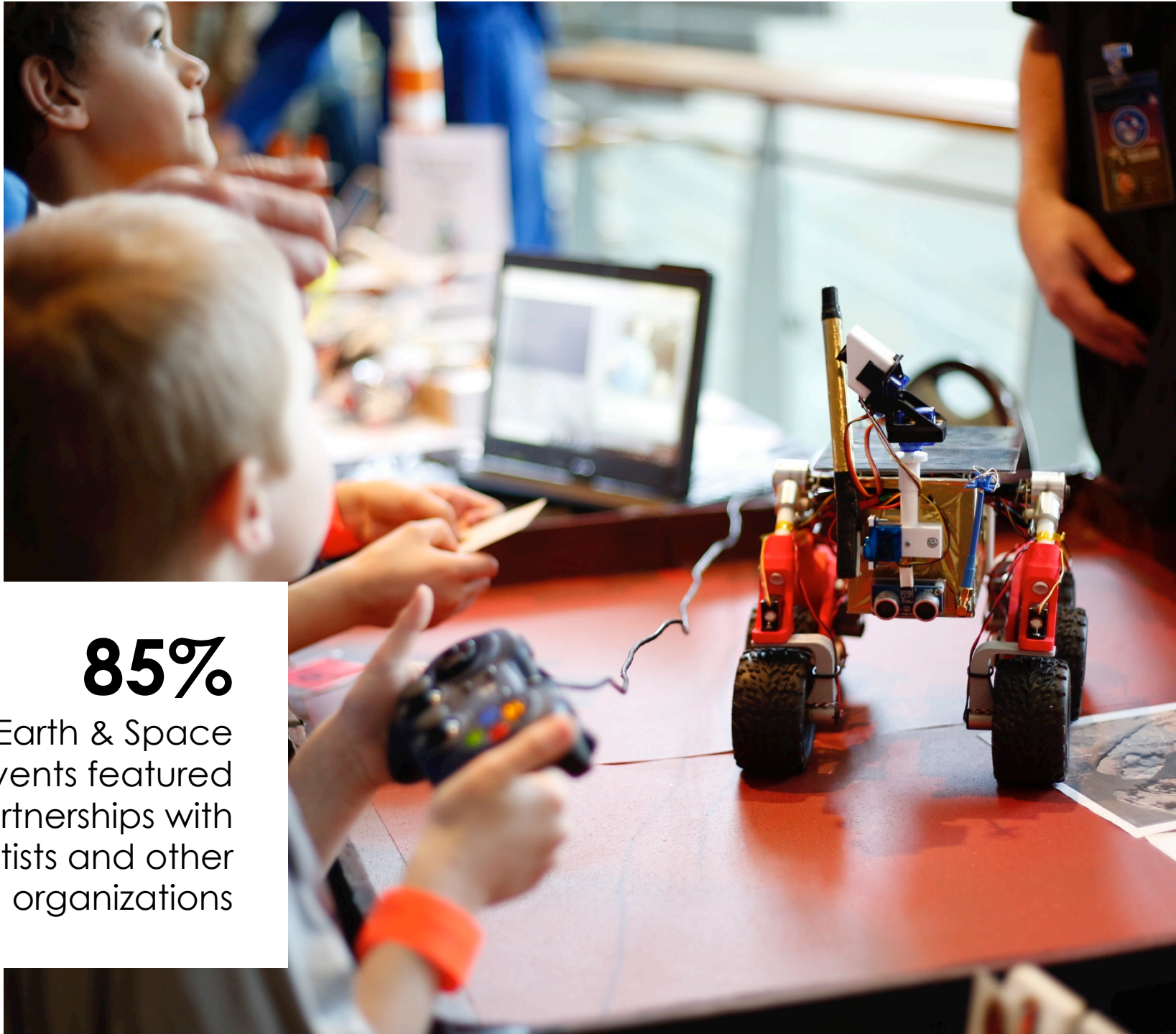
86%

of partners reached
underserved audiences
through Earth & Space
events



91%

of families learned
something new at
Earth & Space activities



85%
of Earth & Space
events featured
partnerships with
scientists and other
organizations



90%

of scientists increased
their public engagement
skills by participating in
Building with Biology



91%

Building with Biology
events addressed
societal and/or ethical
implications of science

Building with Biology: Activities and Conversations about Synthetic Biology

Sunday, June 26

12:00 – 4:00 pm

Hands-on Activities Blue Wing, Lower Level

11:30 am, 12:30 pm, 1:30 pm, and 2:30 pm
Guest Presentations Gordon Current Science &
Technology Stage, Blue Wing, Level 1

6:00 – 8:00 pm

Conversation about Building with Biology
Should We Engineer the Mosquito?
Skyline Room, 6th Floor (access via Green Wing Elevator)



DISCUSSION

PUBLIC ENGAGEMENT WITH
NEUROSCIENCE & SOCIETY

We'd like to know...

- What types of programs are you already doing around brain science?
- Who are you partnering with?
- What types of activities or products would you want from a NISE Net project related to brain science?

Please write your responses on a card, and include your name and organization. Thanks!

THANK YOU

Leadership

Arizona State University
Children's Creativity Museum
Children's Museum of Houston
Museum of Life and Science
Museum of Science
Oregon Museum of Science & Industry
Science Museum of Minnesota
Sciencenter
The Franklin Institute
Tulsa Children's Museum
University of California Berkeley

Advisors

Association of Children's Museums
Center for the Advancement of Informal STEM Learning,
Association of Science-Technology centers
National Girls Collaborative Project

Acknowledgements

The **Nanoscale Informal Science Education Network** was supported by the National Science Foundation under award numbers 0532536 and 0940143. **Multi-Site Public Engagement in Science** is supported by the National Science Foundation under award number 1421179. **Increasing Learning and Efficacy** is supported by the National Science Foundation under award number 1516684. **ChemAttitudes** is supported by the National Science Foundation under award number 1612482. Any opinions, findings, and conclusions or recommendations expressed in this presentation are those of the authors and do not necessarily reflect the views of the Foundation.



Space and Earth Informal STEM Education is supported by NASA under cooperative agreement number NNX16AC67A and 80NSSC18M0061. Any opinions, findings, and conclusions or recommendations expressed in this material are those of the author(s) and do not necessarily reflect the view of the National Aeronautics and Space Administration (NASA).



LCnano received partial funding from the US Environmental Protection Agency through the STAR program (RD83558001). Any opinions, findings, conclusions, or recommendations expressed in this presentation are those of the authors and do not necessarily reflect the views of the LCnano project.



The **Public Engagement with Neuroscience and Society** conference was funded by The Kavli Foundation.

