

## Welcome NISE Network Partners !



[www.nisenet.org](http://www.nisenet.org)



## Presentation Overview

- NISE Network brief overview
- Network Community
- Public Engagement Products
- Professional Development Tools
- Upcoming Opportunities



# NISE Network

## Nanoscale Informal Science Education Network

The NISE Network is a national community of researchers and informal science educators dedicated to fostering public awareness, engagement, and understanding of nanoscale science, engineering, and technology.

## Year 6-10 Focus



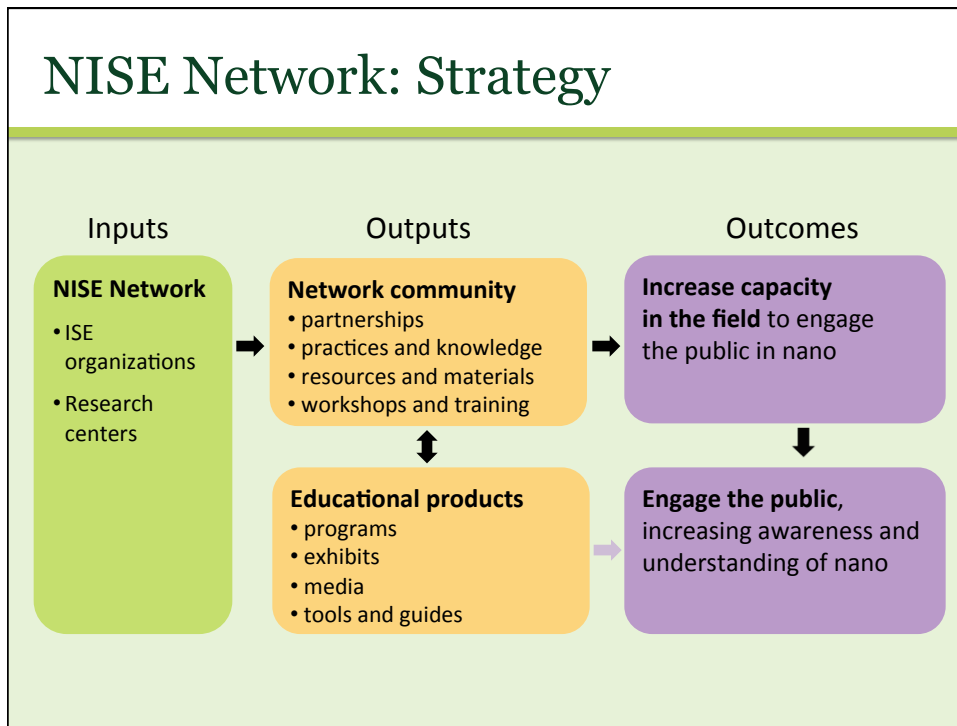
### **Years 1-5: (2005-2010)**

- Building the network

### **Years 6-10: (2010-2015)**

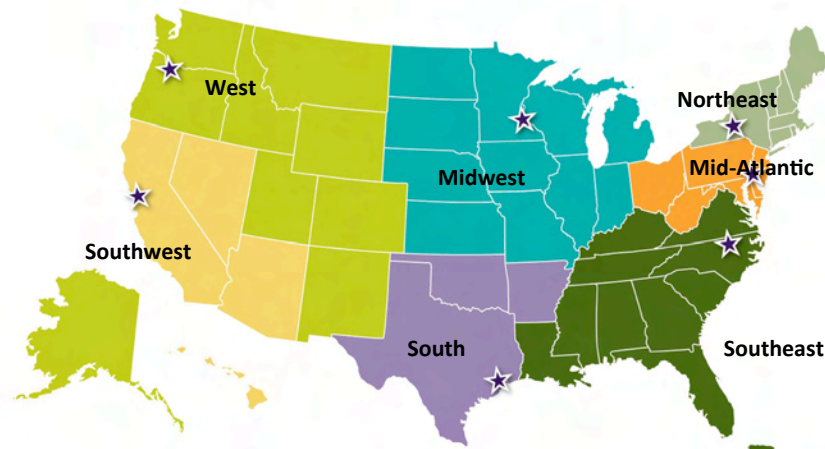
- Engaging the public through the network

## NISE Network: Strategy

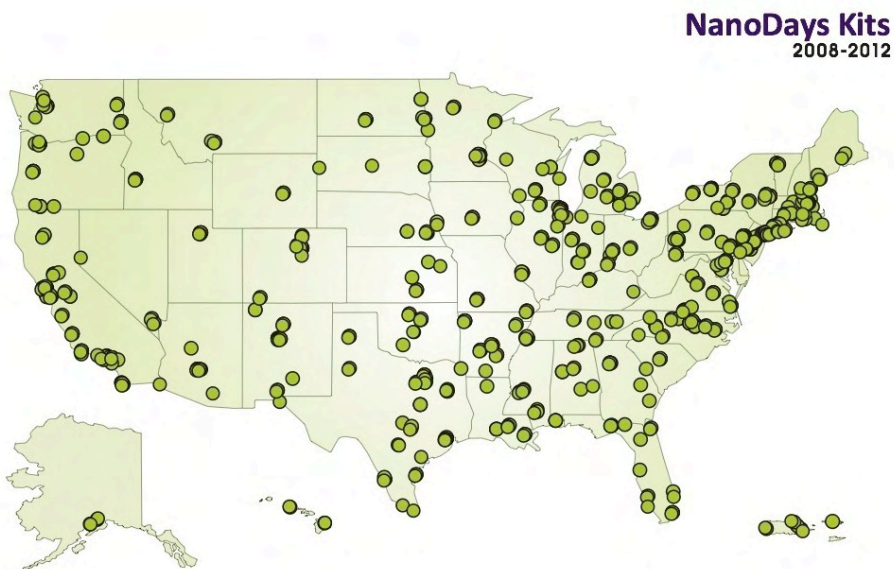


## Network Community

## NISE Net Regional Hub Structure



## NanoDays Participants





## NanoDays Volunteers



Where can you  
**find nano?**



**Public Engagement Products**

- Nano Mini-Exhibition
- Public website and DIY App
- Catalog – recent products

## Dissemination: Mini-Exhibition



# Dissemination: Mini-Exhibition Map



# Website for the Public

## whatisnano.org

- Links to videos, podcasts, online games, and more
- Bilingual English and Spanish
- DIY activities

## DIY Nano App



- Features activities in recipe-style format for at-home activities plus links to videos and [whatsnano.org](http://whatsnano.org)
- Over 29,000 downloads



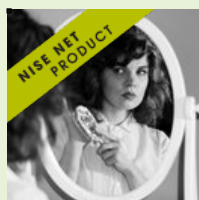
## Educational Products in Catalog



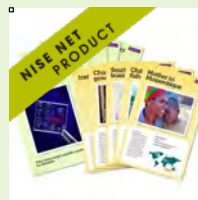
**Exploring Nano & Society – Invisibility Cloak**



**Nano Around the World card game**



**Wonders and Worries – more video in series**

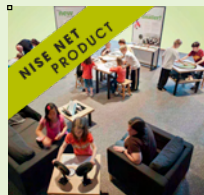


**Exploring Nano & Society – You Decide!**

**More info:** [nisenet.org/catalog](http://nisenet.org/catalog)



## Educational Products in Catalog



**Nano  
mini-exhibition**  
more marketing  
materials, school  
field trip activity



**Scientist  
Speed Dating**  
event for adults



**Big Fish, Little Fish**  
activity for young  
children



**Tiny Tech  
Radio Series**  
audio podcasts

**More info:** [nisenet.org/catalog](http://nisenet.org/catalog)



## Professional Development Tools

- Training
- Museum-Scientist Collaborations
- Reaching Diverse Audiences
- Nano and Society
- Team Based Inquiry
- Conference and Upcoming workshops

## Training Tools



**Nano 101 for staff  
(2012 version)**



**NanoDays training  
materials**  
for staff and  
volunteers

**More info:** [nisenet.org/catalog](http://nisenet.org/catalog) > Tools & Guides

## Scientist - Museum Collaboration Tools



**National  
Chemistry  
Week  
2012**



**RISE Partner Guide:  
Small Steps; Big  
Impact**  
for museums,  
how to start a  
collaboration with  
researchers



**Sharing Science  
Graduate  
Workshop and  
Practicum** for  
graduate students



**REU (Research  
Experiences for  
Undergraduates)  
science  
communication  
workshops**

**More info:** [nisenet.org/RISE](http://nisenet.org/RISE)

## Inclusive Audiences Tools



**Bilingual Design Guide**



**Universal Design Guidelines for programs**



**Translation Process Guide**



**Universal Design Guidelines for exhibits**

**More info:** [nisenet.org/inclusive\\_audiences](http://nisenet.org/inclusive_audiences)

## Nano and Society Tools



**Nano and Society Training Materials for staff and volunteers**



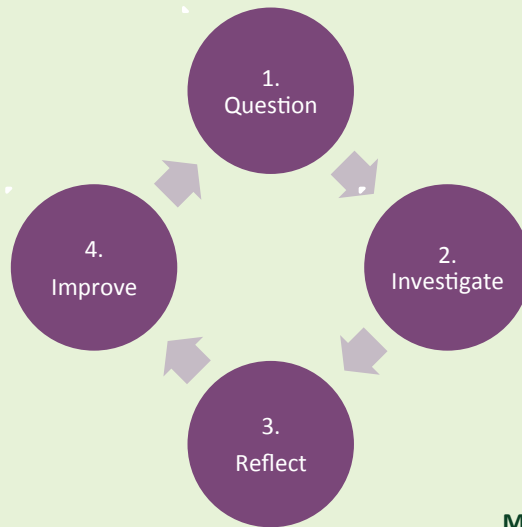
**Visitor Conversations goals and tips**



**Improv Exercises for staff and volunteers**

**More info:** [nisenet.org/inclusive\\_audiences](http://nisenet.org/inclusive_audiences)

## Team Based Inquiry Tools



**Team Based Inquiry** is an approach to formative evaluation.

We will be sharing tools and offering professional development opportunities in the future.

**More info:** [nisenet.org/evaluation](http://nisenet.org/evaluation)

## Professional Development Opportunities



- **Association of Children's Museums (ACM)**

May 2013 in Pittsburgh  
sessions & pre-conference

- **Materials Research Society (MRS)**

November in Boston & April in San Francisco

- **More opportunities**

- Online Brown Bag Conversations in 2013
- Bilingual Workshop - Spring 2013
- Universal Design Workshop - Spring 2013
- Regional Meetings - Fall 2013

**Event details:** [nisenet.org/community/events](http://nisenet.org/community/events)



## Upcoming Opportunities

- NanoDays
- Mini-Grants
- Annual Partner Survey
- and more!

## NanoDays 2013

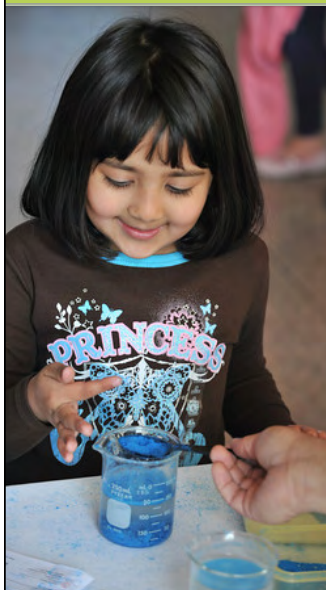


### Host a NanoDays Event: March 30 – April 7, 2013

- New Hands-on Activities
- Physical kit application deadline:  
**December 1, 2012**
- Digital kit materials available  
online: January 15th:
- Continue to use your NanoDays  
materials throughout the year!

**More info:** [nisenet.org/nanodays](http://nisenet.org/nanodays)

## Mini-Grants 2013



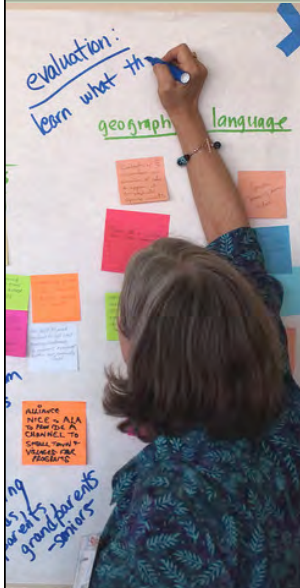
- Awards:
  - 27 mini-grants awarded in 2011
  - 40 mini-grants awarded in 2012
  - plan to award 40 for 2013
- Application deadline: **November 4, 2012**
- \$3,000 maximum
- Eligible activities:
  - New efforts to integrate nano into existing programming
  - New efforts to reach new audiences
  - New partnerships and collaborations

**More info:** [nisenet.org/community/mini-grants](http://nisenet.org/community/mini-grants)

## Dissemination: Mini-Grant Awards Map



## Evaluation and Research



**Evaluation** measures professional learning and practice, public learning, and Network growth.

- Professional Impacts
- Public impacts
- Annual Partner Survey

**Research studies** provide the field with new knowledge and understanding

- Museum – Scientist Partnerships
  - Organizational Change
  - Evidence-based decision making
- Find out what we've learned so far by visiting [nisenet.org](http://nisenet.org)

**More info:** [nisenet.org/evaluation](http://nisenet.org/evaluation)  
**More info:** [nisenet.org/research](http://nisenet.org/research)

## Help Us Learn – Annual Partner Survey



Help us to advance NISE Net and the field by participating in the Annual Partner Survey

## Stay in Touch

### Website networking tools



- Update your profile on the website  
[nisenet.org/faq](http://nisenet.org/faq)
- Sign up for the monthly  
*NanoBite* newsletter  
[nisenet.org/community/nanobite](http://nisenet.org/community/nanobite)
- Join our social networking sites  
[nisenet.org/community](http://nisenet.org/community)



# THANK YOU!

To all our partners - we could not do this work without you!







This presentation is based on work supported by the National Science Foundation under Grant No. 0940143. Any opinions, findings, and conclusions or recommendations expressed in this presentation are those of the author(s) and do not necessarily reflect the views of the Foundation.



## Questions and Discussion?

Please make sure you've signed up on the sign-in sheet

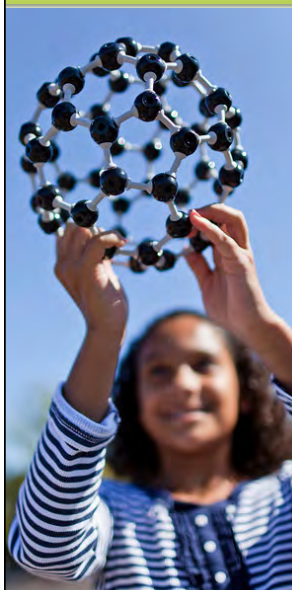


## Sustainability – After Year 10



**How will we build on what has been created through the NISE Network?**

## Sustainability – After Year 10



### **What remains after the funding ends?**

- Field-wide capacity to engage the public in nano
- Relationships, including collaborations between scientists and museums
- Ongoing use of NanoDays and program materials
- Mini-exhibition copies on museum floors
- Website - online catalog
- Evaluation and research knowledge
- Network lessons shared with field